





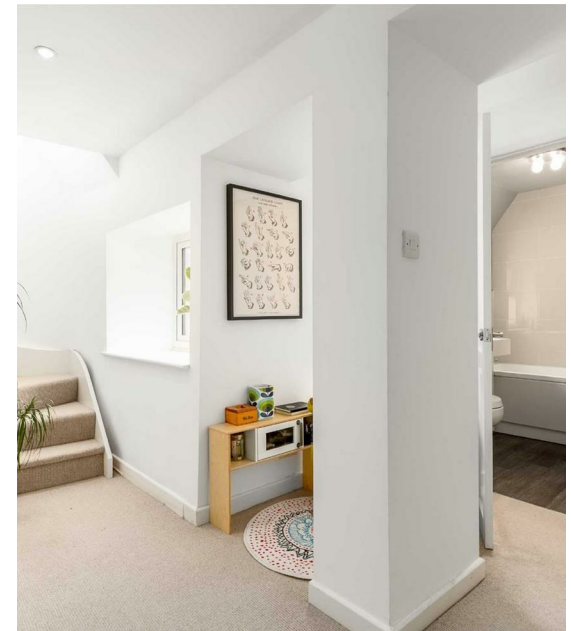
**A bit of a Tardis, the house is much larger than initially appears, as behind the facade is a lovely, roomy house that is in lovely order throughout.**

A large and bright family house with four double bedrooms. Stylishly renovated & modernised, & exceptionally quiet throughout with triple glazing. Two great receptions, open plan; lovely modern kitchen; utility/ cloak room; bathroom & en-suite with roll top bath. Plus, unusually, a garage.

Woodstock is a thriving town just to the north of Oxford which grew up as a coach stop on the road north, then around the Royal Hunting Lodge which became the site of the magnificent Blenheim Palace, home of the Dukes of Marlborough since the early 1700s. The town is now a World Heritage site, and attracts visitors from all over the globe. Central Woodstock offers an amazing diversity of cosmopolitan amenities with high quality restaurants, pubs, boutiques and antique shops all available. There is a Woodstock Under Fives Association (WUFA), which provides a lovely playgroup for children aged 3 to 5, schooling from 5 to 18 and a regular bus service to Oxford and local market towns of Chipping Norton and Witney.

Dating back several hundred years, "Rycote" was sold by me in 2004 as a rather tired 2 storey house in need of comprehensive works. In the intervening years the next owners conducted a thorough campaign of improvement and expansion to maximise the enjoyment of the house. Touches such as triple glazing which all-but kills any outside noise and hand made covers for the Heritage roof windows show care and thought throughout. I sold it again, to our vendors, in 2014. In the intervening time they have continued to improve it, finding it an incredibly flexible and accommodating place to bring up young children, and especially in the current climate it has been ideal for working from home. With a secure garden, parking in the close and the rare advantage of a dedicated garage, plus the "kissing gate" opposite giving free access into Blenheim estate, it's practical as well as full of character.

- Great renovation & upgrades
- Family bath & cloak room
- Pretty garden with terrace
- Four double bedrooms
- Large living & dining rooms
- Garage
- Ensuite & dressing room
- High spec kitchen/ breakfast



Farm End, Woodstock, OX20 1XN

Offers Over £550,000

The entrance leads into a hallway with underfloor heating which extends into the kitchen. To the left the cloak room also doubles as a great storage space and utility. Ahead the kitchen is exceptionally well planned with a wide range of Italian made Mesons kitchen units and an inset pair of sinks alongside integrated Miele appliances and a de Dietrich induction hob. There is ample space for a breakfast table, and the window overlooks the garden while the door to the rear exits to the garden. The main living space is sizeable, with the area open plan to make it light, and double doors to the rear give access to the garden. Unusually the chimney is central between the two living rooms, with the fireplace facing towards the left side - which is the lighter due to the glazed double doors at the rear. It's a great living space with masses of room for family living and by virtue of all the various windows it is extremely light.

Upstairs the space seems, if anything, even greater. To the front of the house two similarly sized bedrooms are both surprisingly generous doubles with more than enough space for wardrobes and other furniture. The third room is also a decent double, this faces out over the garden and the small close behind. Serving all three is an ultra modern bathroom with a thermostatic shower over a bath fitted with a shower screen, and there is also a vanity unit. The landing itself is also light and spacious, and alongside it an alcove with yet another window behind.

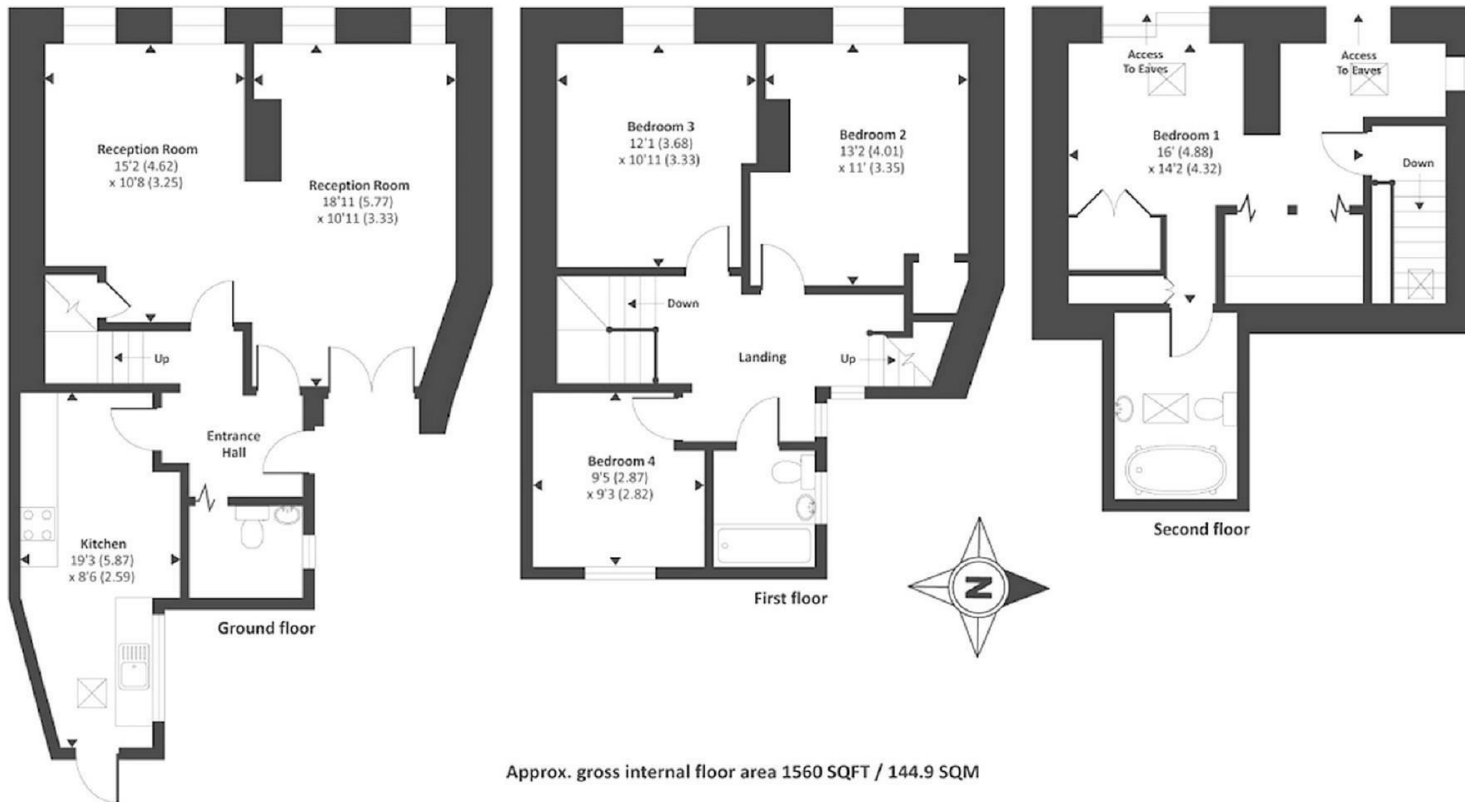
On the second floor the space is effectively a stand-alone suite. To one side as you enter there is an area with eaves storage on either side and a roof light window, a perfect spot for home working or maybe a dressing space. Past the chimney stack the bedroom is double aspect with storage to both sides, and adjacent to it the corridor leads into a very stylish bathroom. This is unusually large for what is effectively an en-suite; it is fitted to a high spec including Fired Earth fittings and tiling and the roll-top bath is a delight.

Outside the garden has been cleverly landscaped to provide a central lawn around which are two terraces - one behind the living room and another at the right hand end of the garden next to a shed and the kitchen door. There are areas designed for keeping bins and also several planter beds. And to the rear the path leads to an iron gate which exits to the close. The garage is a few yards away at the entrance to Farm End and while not allocated there is ample parking in the close.

Mains water, gas, electricity  
West Oxfordshire DC  
Council Tax Band "E"  
£2,367 p.a. 2020/21







Energy Efficiency Rating		
	Current	Potential
<i>Very energy efficient - lower running costs</i>		
(92 plus) <b>A</b>		
(81-91) <b>B</b>		
(69-80) <b>C</b>		
(55-68) <b>D</b>	60	63
(39-54) <b>E</b>		
(21-38) <b>F</b>		
(1-20) <b>G</b>		
<i>Not energy efficient - higher running costs</i>		
<b>England &amp; Wales</b>	EU Directive 2002/91/EC	

to discuss this property or to arrange a viewing please call, or drop us a line [interested@cridlands.co.uk](mailto:interested@cridlands.co.uk)

**01869 343600**

**Important Notice**

These particulars are offered on the understanding that all negotiations are conducted through this company. Neither these particulars, nor oral representations, form part of any offer or contract and their accuracy cannot be guaranteed. Any floor plan provided is for representation purposes only, as defined by the RICS Code of Measuring Practice and whilst every attempt has been made to ensure their accuracy the measurements of windows, doors and rooms are approximate and should be used as such by prospective purchasers. Any services, systems and appliances mentioned have not been tested by us and we cannot verify that they are in working order.